

the Thermasonic® Gel Warmer

## 6. MAINTENANCE AND SERVICE

No routine maintenance is required and there are no user serviceable parts.

### 6.1 CLEANING

Disconnect the Gel Warmer from electrical outlet prior to cleaning. The outer casing may be cleaned using a soft, damp cloth and a mild detergent soap. Do not use an abrasive cleaner. Do not submerge or immerse the Gel Warmer in water. Abrasive materials, such as paper towels, may scratch the finish. Do not use solvents to clean the Gel Warmer.

## 7. WARRANTY

All Thermasonic Gel Warmers have a two-year Limited Warranty from the date of purchase. DO NOT attempt to service your Thermasonic Gel Warmer. Any evidence of the unit being disassembled, tampered with, or misused will void the warranty. Contact Parker Laboratories, Inc. with any service or warranty questions through email: [parker@parkerlabs.com](mailto:parker@parkerlabs.com)

**NOTE:** Product must be registered online at time of purchase.

Please register your model at:

[www.parkerlabs.com/register/thermasonic](http://www.parkerlabs.com/register/thermasonic)

## 8. FREQUENTLY ASKED QUESTIONS

This instruction manual contains the answers to most questions about the use and care of your Thermasonic Gel Warmer. You may also find answers to some of the most frequently asked questions by visiting:

[www.parkerlabs.com/thermasonic](http://www.parkerlabs.com/thermasonic)

### Declaration of Conformity

**Certification:** Parker Laboratories, Inc. certifies this instrument was inspected and tested thoroughly and met its published specifications when shipped.

<b>Manufacturer's Name:</b>	Parker Laboratories, Inc.
<b>Manufacturer's Address:</b>	286 Eldridge Road, Fairfield, NJ 07004 USA
<b>Declares that the product listed conforms to the requirements of the following European Directives:</b>	Name: THERMASONIC® Gel Warmer Model: 82-01, 82-01-20
<b>Low Voltage Directive 2006/95/EC</b>	
<b>EMC Directive 2004/108/EC</b>	
<b>Conforming to the following standards:</b>	
<b>EN 60335-2-15:2002/A1:2005/A2:2008</b>	Certified by Linx Asia Trading Co. LTD.
<b>EN 60335-1:2012</b>	Certified by Linx Asia Trading Co. LTD.
<b>EN 55014-2:1997/A2:2008, CIS PR 14-2:1997</b>	Certified by Linx Asia Trading Co. LTD.
<b>EN 55014-1:2006/A2:2011</b>	Certified by Linx Asia Trading Co. LTD.
<b>EN 61000-3-2:2006/A2:2009</b>	Certified by Linx Asia Trading Co. LTD.
<b>EN 61000-3-3:2008</b>	Certified by Linx Asia Trading Co. LTD.
<b>EN 62233:2008</b>	Certified by Linx Asia Trading Co. LTD.



Parker Laboratories, Inc.  
[www.parkerlabs.com](http://www.parkerlabs.com)

**THERMASONIC**  
GEL WARMER  
*Warming Up Ultrasound*

the Thermasonic® Gel Warmer  
Warm and comfortable is now even better.

## Operating Instructions

For Models: 82-01 (120V), 82-01-20 (230V)



## the Thermasonic® Gel Warmer

## 1. IMPORTANT SAFEGUARDS

This symbol  when indicated on the equipment means:

## CAUTION:

Read these operating instructions fully before use and pay particular attention to sections containing this symbol.

## Always observe the following safety precautions:

1. Read all instructions.
2. To provide continued protection against risk of electric shock, connect only to a power supply that provides a safety ground terminal.
3. Connect only to a power supply with a voltage corresponding to that on the electrical information label.
4. Before moving, disconnect at the power supply socket.
5. If liquid is spilled inside the unit, disconnect it from the power supply and have it checked by qualified personnel.
6. Do not submerge the unit in water.

## 2. INCLUDED IN PACKAGE



Thermasonic  
Gel Warmer



Operating  
Instructions



Power Cord  
(IEC320/C14  
Compatible)



Screws and  
Wall Anchors

## 3. ASSEMBLY

## 3.1 INSTALLATION

The Thermasonic Gel Warmer should be placed away from drafts, in an upright position on a flat, stable surface. Do not lay the unit flat on any side. The unit may also be wall mounted. See section 3.2 for wall-mounting instructions. Plug female end of power cord into IEC320/C14 receptacle (see Figure 1) and male end into an appropriate electrical outlet matching the voltage listed on the electrical information label on the back of the gel warmer.



Figure 1

## 3.2 WALL MOUNTING

The Thermasonic Gel Warmer can be wall mounted with use of the supplied screws and wall anchors. Follow these steps to wall mount.

1. Once wall-mount location has been identified, make two marks on the wall 1.75 inches (4.45 cm) apart. When making your marks, use a level to assure the gel warmer will appear straight when complete.

Warm and comfortable is now even better.


2. If mounting in wood, install screws, and allow 0.1" (2.5mm) clearance between the wall and the screw head. If mounting into drywall, the use of wall anchors is necessary.  **CAUTION:** Never drill or install screws in a wall with wires or plumbing running through it.
3. Carefully position the gel warmer so the large round wells (see Figure 2) on the back of the unit will pass over the screw heads.
4. Press the gel warmer against the wall and slide downward, trapping the screw head in the grooves just above the wells.



Figure 2

## 4. OPERATION

## 4.1 HEAT INDICATOR LAMP

The Heat Indicator Lamp will blink while the unit is approaching the set temperature (see Figure 3). Once that temperature has been reached, the lamp will remain illuminated. Should the unit restart the heating process, the Heat Indicator Lamp will again begin to blink.

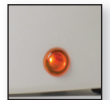


Figure 3

## 4.2 OPERATING THE GEL WARMER



104° F  
(40° C)

*The gel warmer will warm a full bottle of gel to 104° F (40° C).*

 **CAUTION:** Temperature can vary. Always test a small quantity of gel before applying.

Allow approximately two hours for a full bottle of gel to reach proper temperature. Your Thermasonic Gel Warmer is designed for continuous operation, and it is not necessary to disconnect the warmer when not in use.

## 4.3 ERROR CODES

The Thermasonic Gel Warmer contains a temperature sensor to consistently monitor functions and a Microtemp® thermal cutoff to protect against overheating.

If the temperature sensor is not operating at all, the Heat Indicator Lamp will blink once every five seconds. If a short circuit occurs, the Heat Indicator Lamp will blink twice every five seconds. In either circumstance, the heater will not operate.

## 5. TECHNICAL SPECIFICATIONS

This equipment is intended for indoor use and will meet its performance figures within the ambient temperature range of 68°F (20°C) to 95°F (35°C), with maximum relative humidity of 80% (non-condensing). Installation Category II (transient voltages). Pollution Degree 2 in accordance with IEC 664. Suitable for operation at altitude of up to 6,500 feet.

## Specifications:

Supply Voltage Range:	120V~ +/- 10%, 50/60 Hz 230V~ +/- 10%, 50/60 Hz (CE version)
Power Rating:	Model 82-01: 12W, 0.1A Model 82-01-20: 12W, 0.06A