



ATMOS LC 27

Homecare suction device for any situation

*Exactly
what
I need*

LC 27

The economic homecare suction device. With a built-in guarantee of success.

Its technical sophistication makes the new homecare suction device ATMOS LC 27 a worthwhile investment for all service providers in the care sector. The ATMOS LC 27 allows sales organisations, healthcare suppliers, chemists' and nursing homes to meet their patients' needs perfectly and also promises excellent economic efficiency.



No user errors

INNOVATIVE OPERATING CONCEPT

- All controls required for operation are coloured blue: vacuum regulator, vacuum gauge, hose connector, ON/OFF button, release button and bacterial filter cartridge
- All controls are intuitive and easy to use

Reuse is quick and easy

SIMPLE CHANGE TO ANOTHER PATIENT

- Only the single-patient secretion canister system, bacterial filter cartridge and suction hose must be replaced
- No time-consuming reprocessing of the suction device is necessary

Safe suction process

INTELLIGENT CONNECTING SYSTEMS

- The ATMOS canister connecting system prevents the suction hose from being connected directly to the suction device
- The ATMOS hose connector system is absolutely simple to connect

Versatile use

EXTENSIVE RANGE OF ACCESSORIES

- Available in a mains-operated or battery-operated version (battery life around 60 minutes)
- Lots of accessories: carrying bag, mains power unit, car connecting cable, bacterial filter cartridge, suction hose and more

27 l/min
Suction capacity

-80 kPa
Vacuum capacity

60 min
Battery life

DDS
Direct Docking System

1.8 kg
Total weight (mains-operated version)

3.5 kg
Total weight (battery-operated version)

65 dB
Noise emission

Designed, developed and made in Germany

ATMOS LC 27 OVERVIEW

One homecare suction device. Many benefits.

ATMOS bronchial suction devices stand for maintenance-free quality and maximum reliability. Designed and manufactured in Germany, for decades they have been providing the ability to perform, professionally and with economic viability, vitally important bronchial suction for patients who have undergone laryngectomies and tracheotomies as well as for patients who have problems swallowing or who have cystic fibrosis.

The new ATMOS LC 27 homecare suction device is the next in line to carry forth this tradition. Designed specifically to meet homecare requirements, it has proved to be a popular favourite among patients, their relatives and caregivers just as much as among service providers in the medical industry.

INTELLIGENT CONNECTING SYSTEMS

The innovative ATMOS connecting systems for the suction hose and single-patient secretion canister render incorrect connections impossible and eliminate the need for costly repairs for service providers and users.



CONTROLS IN BLUE

All controls required for operation are coloured blue: This aids users in the suction process.



SELF-EXPLANATORY FUNCTIONS

The ATMOS LC 27 homecare suction device's operating concept has been redesigned and made substantially simpler. This cuts instruction time for users to an absolute minimum.



REUSE IS QUICK AND EASY

Reprocessing the suction device before changing it to another patient is quick and easy, saving time and money.



Also available
as a battery-
operated device
for mobile use



ATMOS LC 27 OPERATING CONCEPT

Its handling? Self-explanatory.

When removing secretions, blood or mucus from the respiratory tract, users need to devote their full attention to performing suction correctly without being distracted by the device's controls. The new ATMOS LC 27 homecare suction device's operating concept has been completely redesigned with this in mind.

SIMPLE AND INTUITIVE CONTROLS

Reduced to the essentials, you can operate it without even looking at it: You couldn't describe the new ATMOS LC 27's control panel any more precisely. The large ON/OFF button makes operation palpably easier. The integrated LED lamp additionally indicates when the suction device is running.



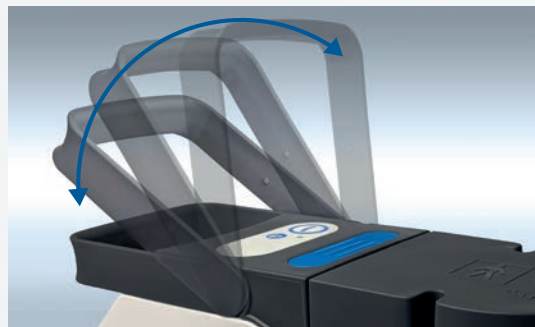
INFINITELY VARIABLE VACUUM ADJUSTMENT

The easy-to-use vacuum regulator on the new ATMOS LC 27 allows you to set up a patient-specific vacuum. You can access the full range of vacuum capacity using the 180° setting dial, with the easily legible vacuum gauge showing precise readings.



ERGONOMIC CARRY HANDLE

To make it easy to transport, the new ATMOS LC 27 homecare suction device features an ergonomic carry handle. Once you've put down the device, just fold the handle back into its starting position to keep it out of the way during the suction process.



No user errors

RELEASE BUTTON

Easy removal of the secretion canister from the suction device

CONTROL PANEL

Intuitive operation without looking

CARRY HANDLE

Ergonomic carry handle



high flow / high vacuum
max. -85 kPa

VACUUM REGULATOR

Patient-specific vacuum adjustment

ATMOS LC 27 REUSE

Change to another patient? Easy.

Time is money: This catchphrase applies especially well to the reuse of a suction device. The simple design of the new ATMOS LC 27 and the easy attachment of a new secretion canister ensure that preparing the device for another patient takes less time and effort, which in turn cuts costs noticeably.

BACTERIAL FILTER CARTRIDGE

Quick and easy to change

SECRETION CANISTER LID

Easy connection of the secretion canister to the suction device

SUCTION DEVICE

Completely maintenance-free and easy to clean

SINGLE-PATIENT SECRETION CANISTER

Easy to change and usable over the long term

Reuse is
quick and
easy



GET READY FASTER



The new ATMOS LC 27 comes with a number of features to reduce reprocessing time considerably:

The easy-to-use release button allows for quick removal of a used single-patient secretion canister from the suction device.

The design of the suction device itself makes it completely impossible for dirt or germs to get into the device, so that you only have to clean or disinfect it on the outside. All you need to change is the secretion canister system, bacterial filter cartridge and suction hose.

SINGLE-PATIENT SECRETION CANISTER IS DISHWASHER PROOF

Another new highlight of the new ATMOS LC 27 is its ergonomic, easy-to-clean secretion canister.

Made of dishwasher-proof plastic, it can be removed effortlessly from the suction device after suctioning and cleaned by hand using commercial cleaning agents – or just put it into a dishwasher.



ATMOS LC 27 CONNECTING SYSTEMS

Wrong connections? Impossible.

During bronchial suction, it happens time and again that relatives or care staff who have not received proper instructions accidentally connect the suction hose straight to the suction device instead of to the secretion canister. The result: Secretion enters into the device, damaging it and necessitating costly repairs. The new ATMOS LC 27 homecare suction device rules this out effectively: It uses not one, but two innovative connecting systems.

SECRETION CANISTER CONNECTING SYSTEM

The innovative Direct Docking System (DDS) eliminates the need for a hose connection between the suction device and secretion canister. Instead, the ATMOS secretion canister, together with its lid, connects directly to the suction device.



SUCTION HOSE CONNECTING SYSTEM

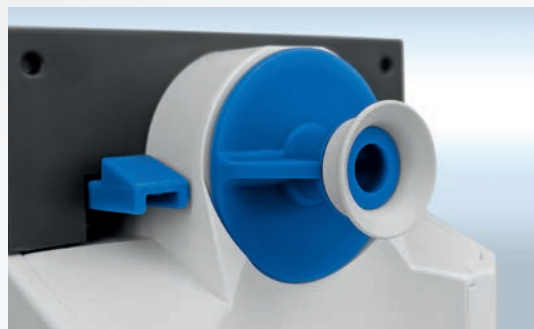
The connecting system designed by ATMOS enables users to connect the hose firmly to the secretion canister with a simple twisting motion and to disconnect it just as easily after the suction process is completed.

Patent pending



BACTERIAL FILTER CARTRIDGE

The bacterial filter is an additional barrier that prevents liquids, secretions or dirt from entering the device. In the ATMOS LC 27, it comes preinstalled in the cartridge, making it easy to attach and replace – for maximum protection against infection and contamination.





Safe suction process



BACTERIAL FILTER CARTRIDGE

No germs or liquids can enter the device



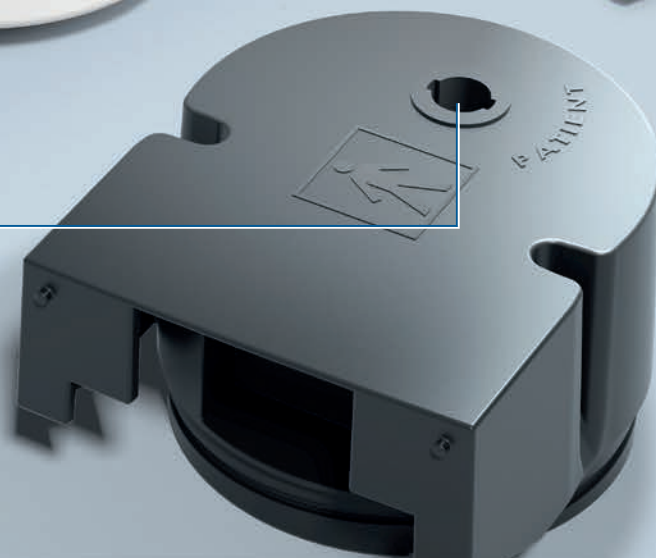
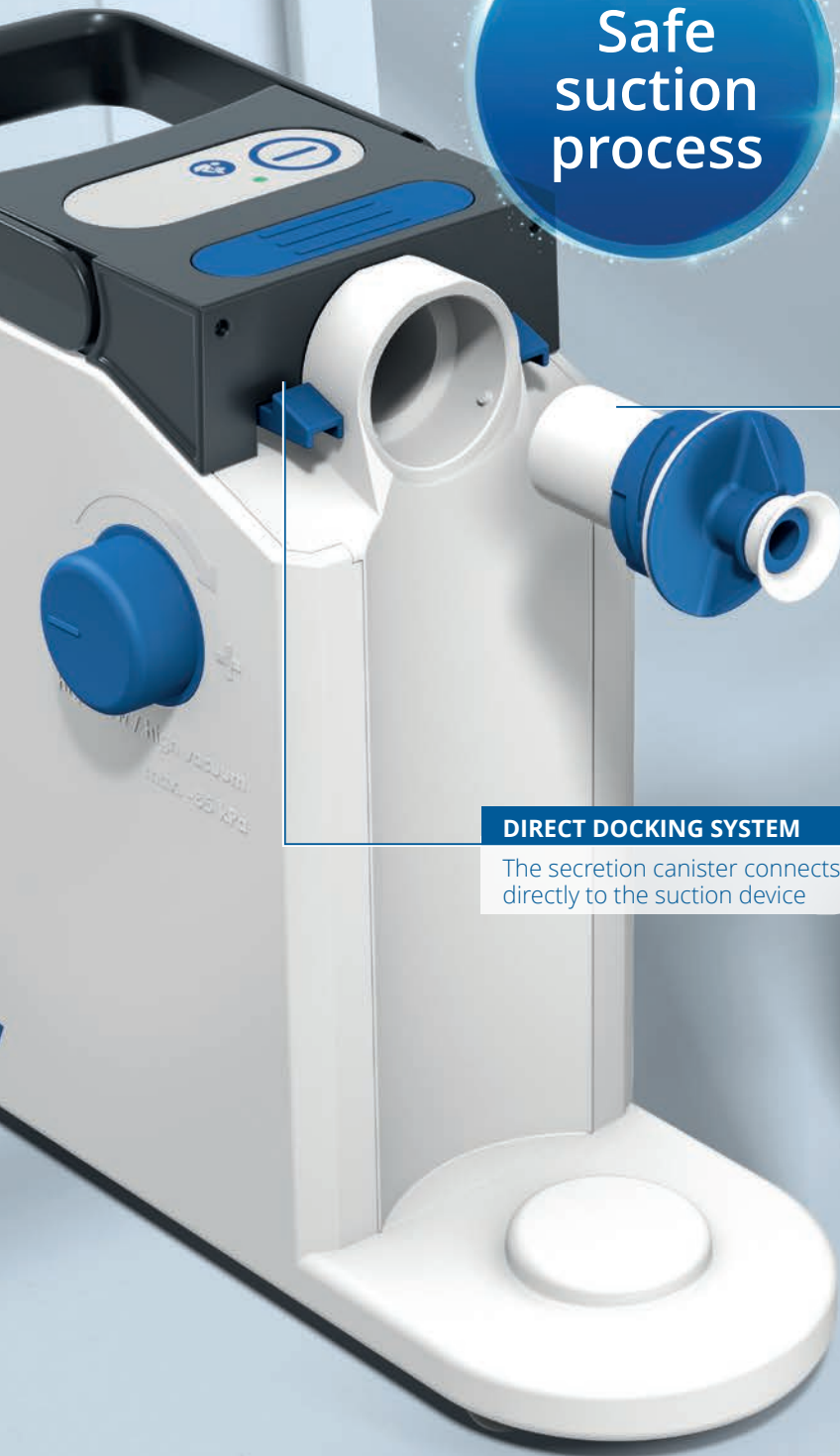
DIRECT DOCKING SYSTEM

The secretion canister connects directly to the suction device



CONNECTING THE HOSE

Connecting the hose to the secretion canister is simple



ATMOS LC 27 ACCESSORIES

Accessories? Extensive range.

Besides the top-quality materials and perfect workmanship, it's definitely the extensive range of accessories that make the ATMOS LC 27 so versatile and safe. The suction device comes with a single-patient secretion canister, a suction hose and a bacterial filter cartridge.



Versatile
use

info

Information leaflet for users

ATMOS has compiled a user leaflet with key information on the new homecare suction device specially for patients, relatives and caregivers.

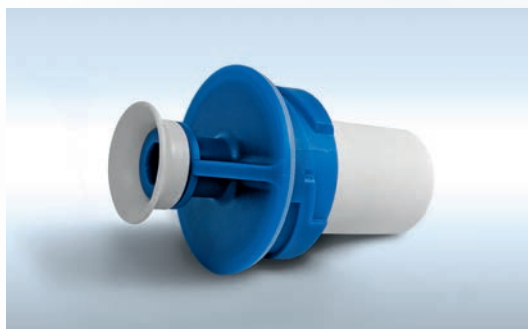
Download the leaflet for free from the ATMOS website. You'll also find a video for users providing a demo of the ATMOS LC 27's special features and operating principles.



Scan the QR code to go straight to the ATMOS LC 27 website.

**ATMOS CARRYING BAG**

The handy carrying bag lets you transport the ATMOS LC 27 and the consumables you need safely and conveniently.

**BACTERIAL FILTER CARTRIDGE**

Under normal conditions of use, the bacterial filter cartridge offers effective protection for 14 days.

**ATMOS SUCTION HOSE**

ATMOS's clinically tested suction hoses can be used for up to 28 days if handled properly.

ATMOS LC 27

Homecare suction device? ATMOS LC 27.

Premium quality, absolute reliability, user-oriented operating concept, a plethora of product features to ease the workload and an extensive range of accessories make the new ATMOS LC 27 homecare suction device indispensable wherever a professional, safe and economic solution for bronchial suction is required.

THE IDEAL BRONCHIAL SUCTION DEVICE FOR HOMECARE



ATMOS LC 27 – TECHNICAL DATA



ATMOS LC 27



ATMOS LC 27 Battery

Device variant	Mains operation	Battery operation
Suction capacity	27 l/min ± 3 l/min	27 l/min ± 3 l/min
Max. vacuum	-80 kPa ± -5 kPa	-80 kPa ± -5 kPa
Vacuum setting	Infinitely variable vacuum adjustment	Infinitely variable vacuum adjustment
Operating time	Interval operation max. 30 minutes on/min. 30 minutes off	Interval operation max. 30 minutes on/min. 30 minutes off
Dimensions WxHxD	286 x 243 x 118 mm	286 x 243 x 118 mm
Weight	1.8 kg	3.5 kg
Noise level	< 65 dB (A) @1m	< 65 dB (A) @1m
Battery	-	Lead-acid battery
Battery life	-	approx. 60 minutes
Battery charging time	-	50% in 3 h max. in 12 h
Backup mode	-	If battery is exhaustively discharged, device can be operated on mains power
Voltage	100 - 240 V~ ± 10%; 50/60 Hz	100 - 240 V~ ± 10%; 50/60 Hz
Type of protection	IP 21	IP 21
Secretion canister system	Single-patient secretion canister (800 ml)	Single-patient secretion canister (800 ml)
Product version	DDS	DDS
Article number	321.1000.0	321.2000.0
Product version	DDS Universal	DDS Universal
Article number	321.1300.0	321.2300.0

ATMOS LC 27 – ACCESSORIES & CONSUMABLES



Carrying bag

Article number

321.0350.0



Car connecting cable

313.0436.0



Mains power unit

011.1363.0



5x

Hose adapter

321.0040.0



Single-patient secretion canister

Article number

321.0300.0



10x

Bacterial filter cartridge

321.0027.0



10x

Suction hose with fingertip

321.0100.0



10x each

Consumables set

321.0340.0



ATMOS MedizinTechnik GmbH & Co. KG

Ludwig-Kegel-Str. 16
79853 Lenzkirch
Germany

Phone +49 (0)7653-689-0
Fax +49 (0)7653-689-190
E-Mail atmos@atmosmed.de

www.atmosmed.link/LC27



Scan the QR code
to go straight to the
ATMOS LC 27 website.